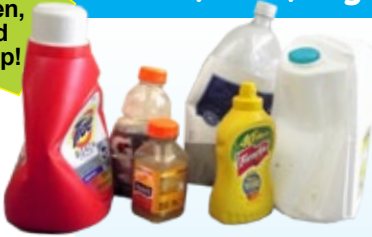


Recycle All Together In Your **NEW** Recycling Cart!

Empty,
flatten,
and
recap!

Bottles, Cans, Jugs, Tubs, Jars and All Paper



Plastic Bottles and Jugs
Botellas y jarros de plástico



Plastic Cups and Tubs
#2, #4 and #5
Vasos y recipientes de plástico

NEW
at the
curb!



Phonebooks
Guías telefónicas



Flat and Gable-topped cartons
Envases de cartón con tapas
planas o tapas de pico



Mixed Paper
Todo el papel



Newspapers and Inserts
Periódicos y las inserciones

Shredded paper
should be inside
a stapled paper
bag only.



Catalogs and Glossy Magazines
Catálogos y revistas elegantes



Metal Cans
Latas de metal



Empty Aerosol Cans
Latas de aerosol



Aluminum Foil
Papel de aluminio



Glass Bottles and Jars
Botellas y frascos de vidrio



Corrugated Cardboard
Cartón corrugado

No Plastic Bags
No bolsas de plástico



No Garbage
No basura

Cart service begins
week of June 30

Have cart to the curb by 7am

Items must fit loosely in cart.

Keep lid closed.

**Empty, flatten and fold
corrugated cardboard.**

**Items left on the ground
will not be collected.**

Keep items clean and dry.

**Flatten and recap
what you can.**

A NEW 95-gallon wheeled recycling cart will be delivered to your house in June of 2014. Start using it the week of June 30 (not before) on your regular recycling day. Follow these guidelines:

- Starting June 30, bring your cart to the street by 7AM on your recycling day. Roll it back when emptied.
- Place your cart at the curb with 3 feet clearance from cars, trees, and any other objects.
- Place your old recycling bins inside your cart through the month of July if you want them recycled. Do not use your old bins at the curb after June 30.
- Place only the items listed on the other side of this card inside your cart. Items must fit loosely, and the lid must be able to fully close.
- Any items left on the ground or in another container will not be collected.
- NO plastic bags or garbage in your recycling cart. These items interfere with recycling, damage equipment, and can be costly.
- Cut or fold empty corrugated cardboard boxes to fit loosely in cart. Collection trucks lift and tip carts automatically -- stuck items will not get recycled!
- You can now recycle #2, #4 and #5 non-bottle rigid plastics such as tubs and cups in your cart.
- Your new recycling cart contains a computer chip that ties it to your address to prevent loss and theft, and to track participation rates.
- If your cart is damaged or missing through no fault of the household, let us know so we can repair or replace it. Cart replacement costs \$60.

Thank you for recycling!

Orange County Solid Waste Management Department

(919) 968-2788 • recycling@orangecountync.gov • www.orangecountync.gov/recycling/

Presorted
First Class Mail
US POSTAGE
PAID
Permit No. 2483
Raleigh NC